



MONTHLY MEMBERSHIP PROGRESS REPORT

District 322 E

Results as of: 07/31/2018

GMT: SWADESH RANJAN SAHA

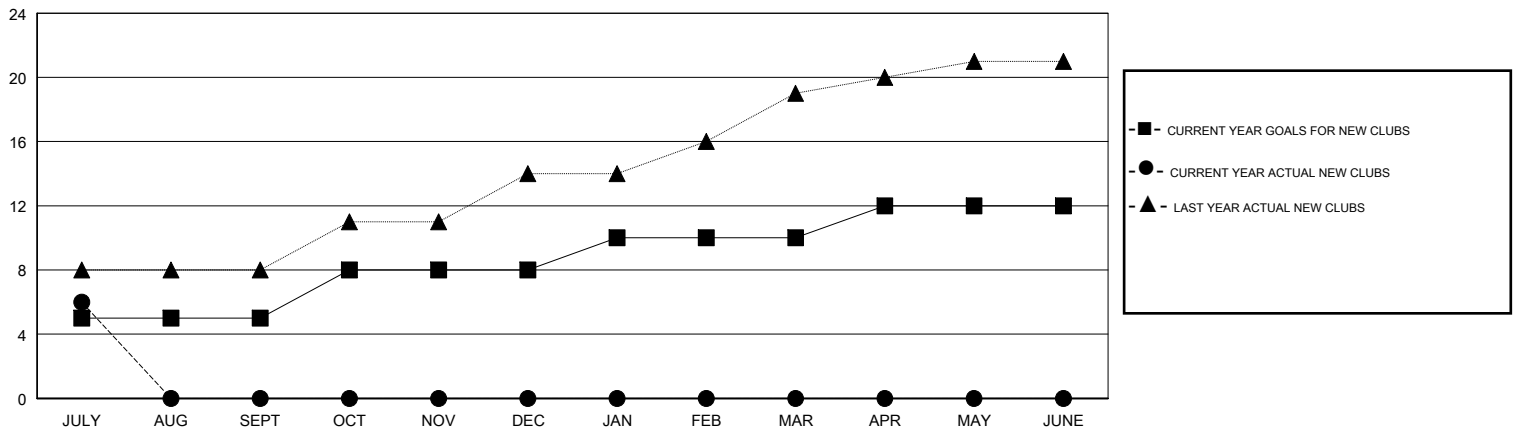
LOCATION INDIA

GMT CA

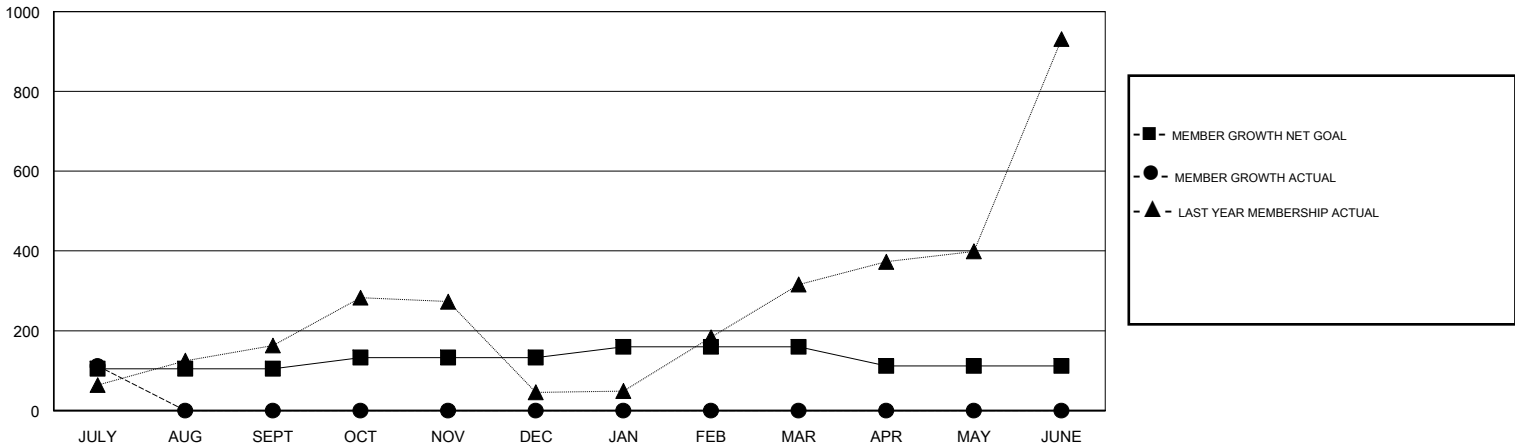
Clubs			
RESULTS FOR 2018-2019			
QUARTER	NEW CLUB GOAL	NEW CLUBS	DROPPED CLUBS
JULY/AUG/SEPT	5	6	0
OCT/NOV/DEC	3	0	0
JAN/FEB/MAR	2	0	0
APR/MAY/JUNE	2	0	0

Members			
RESULTS FOR 2018-2019			
QUARTER	MEMBER GROWTH NET GOAL	MEMBER GROWTH ACTUAL	DROPPED MEMBERS ACTUAL (including transfers)
JULY/AUG/SEPT	105	160	47
OCT/NOV/DEC	28	0	0
JAN/FEB/MAR	27	0	0
APR/MAY/JUNE	-48	0	0

GOALS AND ACTUAL NEW CLUBS CUMULATIVE



GOALS AND ACTUAL MEMBERS CUMULATIVE



DROPPED CLUBS: 0	15 CLUBS OF 129 ADDED 1 OR MORE NEW MEMBERS	<u>GENDER DISTRIBUTION</u> MALE 3,287 (67.45%) FEMALE 1,586 (32.55%) Women Percentage Fiscal Year Goal: 37%
<u>DROPPED MEMBERS</u> DECEASED 0 CLUB CANCELLED 0 OTHER 47 TOTAL 47	CLICK HERE FOR CUMULATIVE MEMBERSHIP DATA	TOTAL FAMILY UNIT MEMBERS 1,968 FAMILY MEMBERS PAYING HALF DUES 1,066